



EMPIRE SERIES

For your largest applications, turn to the Empire Series from Allied Moulded. Fiberglass construction offers durability and strength without the excessive weight of a comparable metal enclosure. Available in ten standard sizes, including eight wall mount cabinets from 36" x 30" x 12" to 60" x 36" x 16" and two freestanding sizes up to 72" x 49" x 25". A full range of modification services are also available on our Empire Series enclosures.

Empire Series Features & Benefits

- Ultraguard® fiberglass reinforced polyester material construction for durability
- Continuous stainless steel hinge
- Flexible, self-gripping gasket compresses over flange for tight seal
- Wall mount units need only three closure latches to meet NEMA Type 4X requirements
- Freestanding units have 3-point latching handles which meet NEMA Type 4 requirements
- Optional painted carbon steel back panels are fully interchangeable with other specified enclosures

Suitable Applications

- Electrical junctions
- Terminal wiring
- Electrical and electronic controls, instruments, components
- Housing pushbuttons, switches or other devices
- Other industrial control equipment



EMPIRE SERIES: WALL MOUNT

APPLICATION

- Designed to insulate and house electrical and electronic controls, instruments or components for indoor and outdoor applications
- Especially well suited for high temperature or corrosive environments
- Protects from dirt, dust, oil and water

STANDARDS

- UL Types 1, 4, and 4X
- CSA Types 1, 4, and 4X
- NEMA Types 1, 4, and 4X
- IEC 60529 Type IP66

CONSTRUCTION

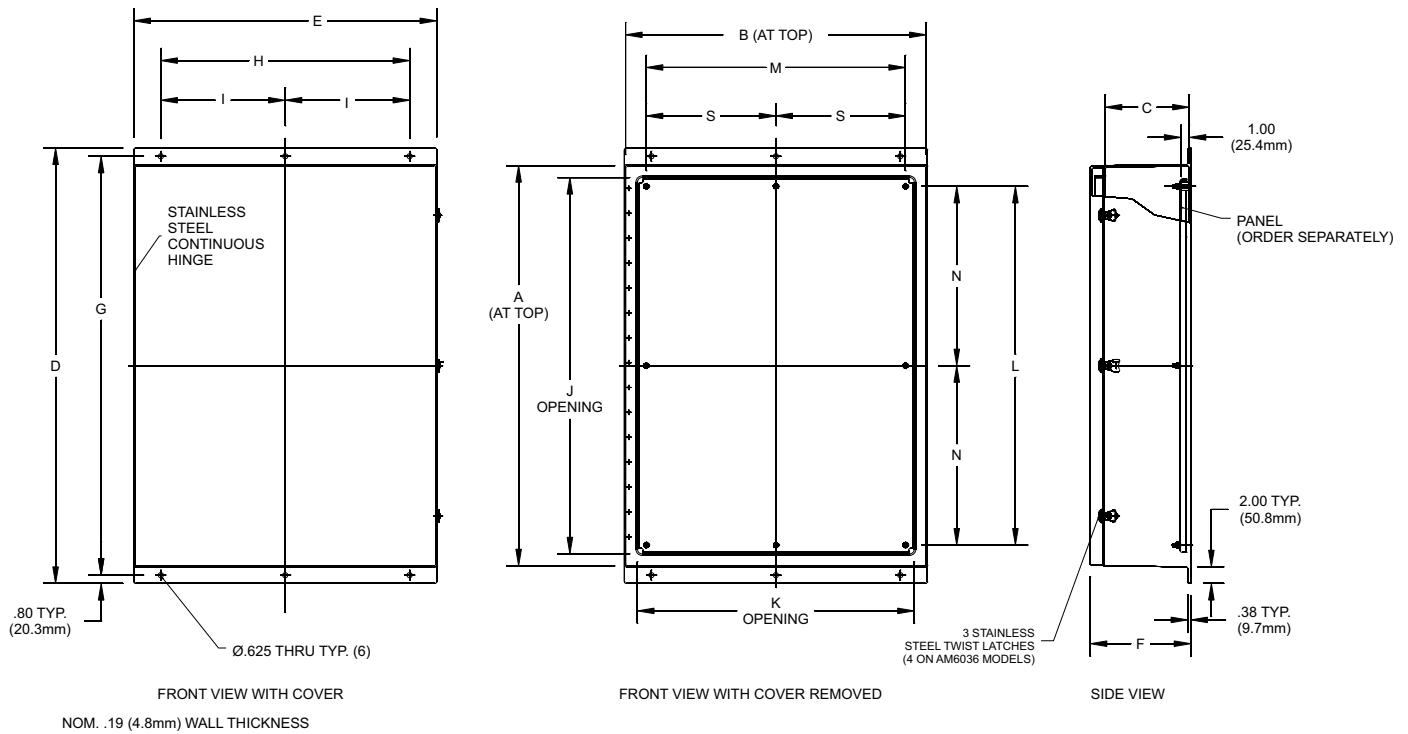
- Durable, corrosion resistant Ultraguard® fiberglass material construction
- Flexible, self-gripping gasket compresses over flange for tight seal and needs only three closure twist latches to meet NEMA 4X requirements (AM6036 requires 4 latches)
- Heavy-duty continuous 304 stainless steel hinge
- Ultraguard® fiberglass material has UV inhibitors which provide ideal protection from outdoor weathering

ACCESSORIES

- Optional painted carbon steel back panels
- Optional thermal management products (See pages 102-103.)
- Optional print pocket

MODIFICATIONS

- See page 106



Part No.	A	B	C	D	E	F	G	H	I	J	K	L	M
AM363012L	921mm	768mm	258mm	1,029mm	791mm	306mm	988mm	610mm	305mm	851mm	699mm	794mm	641mm
AM363016L	915mm	763mm	360mm	1,029mm	791mm	407mm	988mm	610mm	305mm	851mm	699mm	794mm	641mm
AM363612L	921mm	921mm	258mm	1,029mm	944mm	306mm	988mm	762mm	381mm	851mm	851mm	794mm	794mm
AM363616L	915mm	915mm	360mm	1,029mm	944mm	407mm	988mm	762mm	381mm	851mm	851mm	794mm	794mm
AM483612L	1,226mm	921mm	258mm	1,334mm	944mm	306mm	1,293mm	762mm	381mm	1,156mm	851mm	1,099mm	794mm
AM483616L	1,220mm	915mm	360mm	1,334mm	944mm	407mm	1,293mm	762mm	381mm	1,156mm	851mm	1,099mm	794mm
AM603612L	1,530mm	921mm	258mm	1,638mm	944mm	306mm	1,598mm	762mm	381mm	1,461mm	851mm	1,403mm	794mm
AM603616L	1,525mm	915mm	360mm	1,638mm	944mm	407mm	1,598mm	762mm	381mm	1,461mm	851mm	1,403mm	794mm

Part No.	N	S	# PANEL MOUNT STUDS	# OF TWIST LATCHES
AM363012L	397mm	321mm	6	3
AM363016L	397mm	321mm	6	3
AM363612L	397mm	397mm	8	3
AM363616L	397mm	397mm	8	3
AM483612L	549mm	397mm	8	3
AM483616L	549mm	397mm	8	3
AM603612L	702mm	397mm	8	4
AM603616L	702mm	397mm	8	4

Optional Carbon Steel Back Panels

Part No.	Height	Width
P3630CS	833mm	686mm
P3636CS	833mm	833mm
P4836CS	1143mm	833mm
P6036CS	1448mm	833mm





EMPIRE SERIES: FREE STANDING SINGLE DOOR

APPLICATION

- Designed to insulate and house electrical and electronic controls, instruments or components for indoor and outdoor applications
- Especially well suited for high temperature or corrosive environments
- Protects from dirt, dust, oil and water

STANDARDS

- UL Types 1, 4, and 4X
- CSA Types 1, 4, and 4X
- NEMA Types 1, 4, and 4X
- IEC 60529 Type IP66

CONSTRUCTION

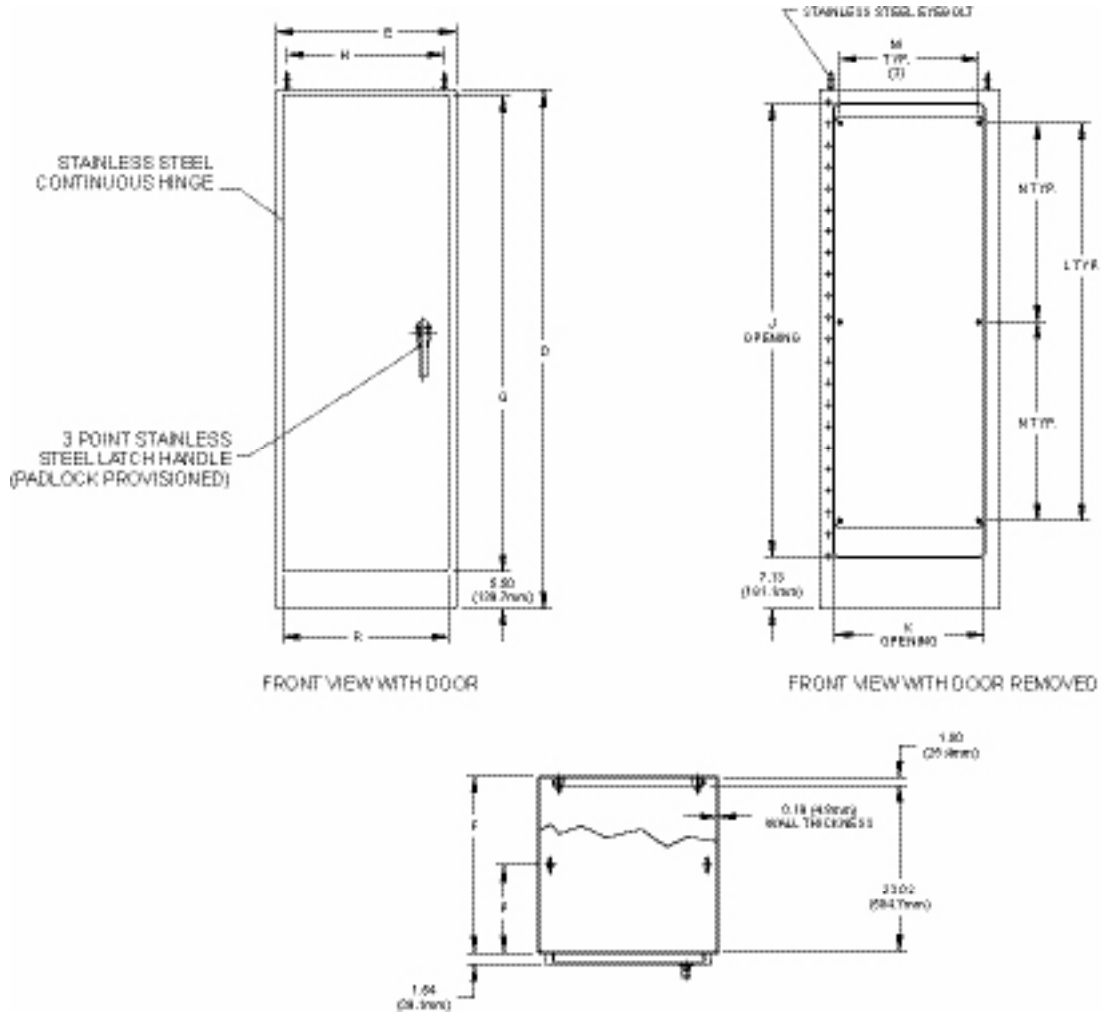
- Durable, corrosion resistant Ultraguard® fiberglass material construction
- Soft, self-gripping gasket compresses over flange for tight seal and has one 3 point latching handle with padlocking provision
- Heavy-duty continuous 304 stainless steel hinge
- Ultraguard® fiberglass material has UV inhibitors which provide ideal protection from outdoor weathering
- Heavy duty lifting eyes
- Molded-in drip shield

ACCESSORIES

- Optional painted carbon steel back panels
- Optional thermal management products (See pages 102-103.)
- Optional print pocket

MODIFICATIONS

See page 106



Part No.	D	E	F	H	J	K	L	M	N	P	Q	R	# PANEL MOUNT STUDS
AM722525FS	1829mm	635mm	622mm	552mm	1597mm	524mm	1403mm	489mm	702mm	311mm	1676mm	584mm	6

Optional Carbon Steel Back Panels

Part No.	Height	Width
P7225CS	1448mm	533mm





EMPIRE SERIES: FREE STANDING DOUBLE DOOR

APPLICATION

- Designed to insulate and house electrical and electronic controls, instruments or components for indoor and outdoor applications
- Especially well suited for high temperature or corrosive environments
- Protects from dirt, dust, oil and water

STANDARDS

- UL Types 1, 4, and 4X
- CSA Types 1, 4, and 4X
- NEMA Types 1, 4, and 4X
- IEC 60529 Type IP66

CONSTRUCTION

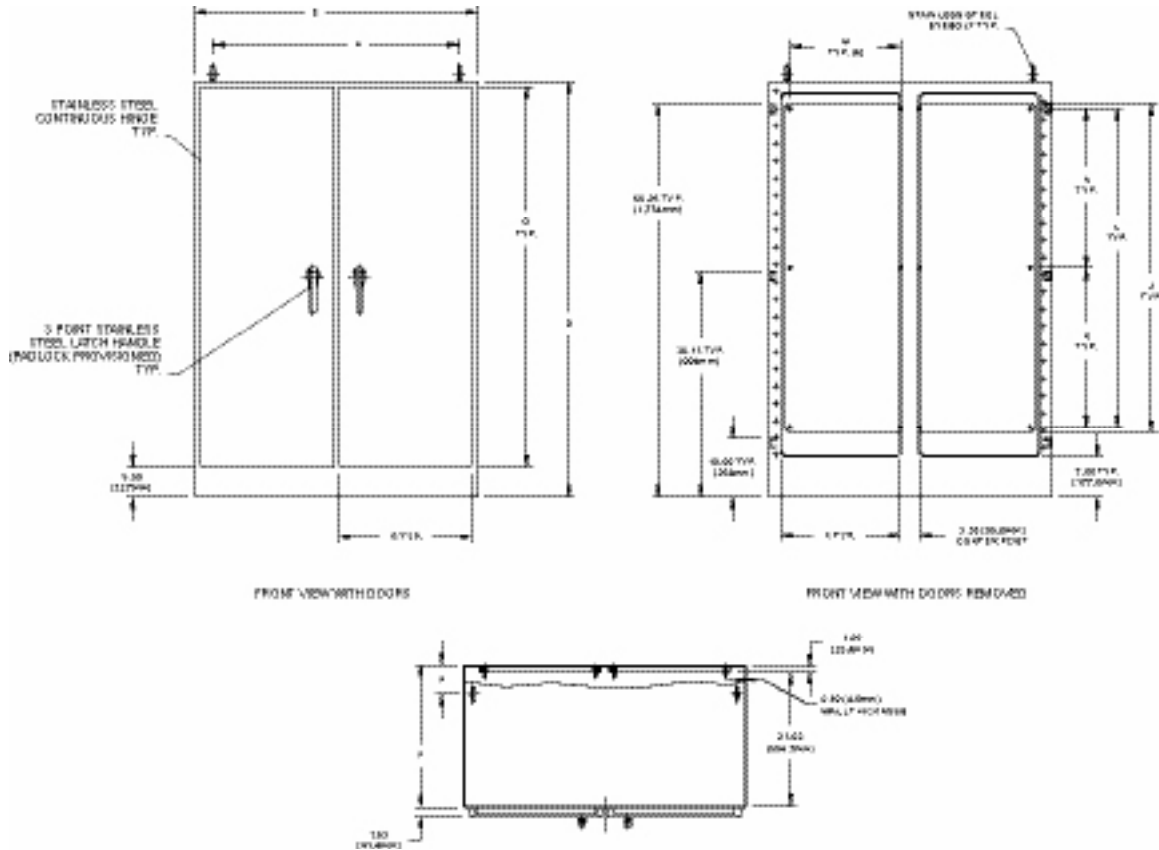
- Durable, corrosion resistant Ultraguard® fiberglass material construction
- Flexible, self-gripping gasket compresses over flange for tight seal and has two 3 point latching handles with padlocking provision
- Heavy-duty continuous 304 stainless steel hinge
- Ultraguard® Fiberglass material has UV inhibitors which provide ideal protection from outdoor weathering
- Heavy duty lifting eyes
- Molded-in drip shield
- Fiberglass mounting strut installed on side

ACCESSORIES

- Optional painted carbon steel back panels
- Optional thermal management products (See pages 102-103.)
- Optional print pocket

MODIFICATIONS

See page 106



Part No.	D	E	F	H	J	K	L	M	N	P	Q	R	# PANEL MOUNT STUDS
AM724925FSDD	1829mm	1245mm	622mm	1149mm	1597mm	524mm	1403mm	489mm	702mm	127mm	1676mm	584mm	12

Optional Carbon Steel Back Panels

Part No.	Height	Width
P7249CS	1448mm	533mm

